

## XT Series Components and Accessories

### XT Setting Rings: X Class

Part Number	Size
54-332-004	.100"
54-332-005	.160"
54-332-006	.200"
54-332-007	.312"
54-332-008	.500"
54-332-009	.750"
54-332-010	1.375"
54-332-012	2.625"
54-332-013	3.250"
54-332-014	5"
54-332-015	7"
54-332-016	9"
54-332-017	11"



*Extensions for deep bore applications*

### XT Extensions

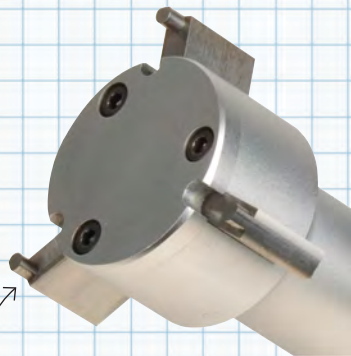
Part Number	Length	Diameter	Fits Heads
54-336-301	2.5" (63mm)	.23"	.250"—.375" (6—10mm)
54-336-302	3" (76mm)	.366"	.375"—.500" (10—12.5mm)
54-336-303	4" (100mm)	.479"	.500"—.750" (12.5—20mm)
54-336-304	6" (150mm)	.740"	.750"—2" (20—50mm)
54-336-305	6" (150mm)	.924"	2" and up (50mm and up)
54-336-306	20" (500mm)	.757"	.750" and higher
54-336-307	40" (1000mm)	1.365"	1.375" and higher

### Replacement Heads with Standard Anvils

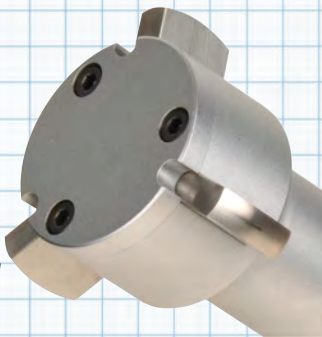
Part No.	Size
54-342-006	.080"—.100" (2-2.5mm)
54-342-007	.100"—.120" (2.5-3mm)
54-342-008	.120"—.160" (3-4mm)
54-342-009	.160"—.200" (4-5mm)
54-342-010	.200"—.250" (5-6mm)
54-342-011	1/4—5/16" (6-8mm)
54-342-012	5/16—3/8" (8-10mm)
54-342-013	3/8—1/2" (10-12.5mm)
54-342-014	1/2—5/8" (12.5-16mm)
54-342-015	5/8—3/4" (16-20mm)
54-342-016	3/4—1" (20-25mm)
54-342-017	1—1-3/8" (25-35mm)
54-342-018	1-3/8—2" (35-50mm)
54-342-019	2—2-5/8" (50-65mm)
54-342-020	2-5/8—3-1/4" (65-80mm)
54-342-021	3-1/4—4" (80-100mm)
54-342-022	4—5" (100-125mm)
54-342-023	5—6" (125-150mm)
54-342-024	6—7" (150-175mm)
54-342-025	7—8" (175-200mm)
54-342-026	8—9" (200-225mm)
54-342-027	9—10" (225-250mm)
54-342-028	10—11" (250-275mm)
54-342-029	11—12" (275-300mm)

### Replacement Heads with Spherical Anvils

Part No.	Size
54-343-006	.080"—.100" (2-2.5mm)
54-343-007	.100"—.120" (2.5-3mm)
54-343-008	.120"—.160" (3-4mm)
54-343-009	.160"—.200" (4-5mm)
54-343-010	.200"—.250" (5-6mm)
54-343-011	1/4—5/16" (6-8mm)
54-343-012	5/16—3/8" (8-10mm)
54-343-013	3/8—1/2" (10-12.5mm)
54-343-014	1/2—5/8" (12.5-16mm)
54-343-015	5/8—3/4" (16-20mm)
54-343-016	3/4—1" (20-25mm)
54-343-017	1—1-3/8" (25-35mm)
54-343-018	1-3/8—2" (35-50mm)
54-343-019	2—2-5/8" (50-65mm)
54-343-020	2-5/8—3-1/4" (65-80mm)
54-343-021	3-1/4—4" (80-100mm)
54-343-022	4—5" (100-125mm)
54-343-023	5—6" (125-150mm)
54-343-024	6—7" (150-175mm)
54-343-025	7—8" (175-200mm)
54-343-026	8—9" (200-225mm)
54-343-027	9—10" (225-250mm)
54-343-028	10—11" (250-275mm)
54-343-029	11—12" (275-300mm)



*Standard Anvils*



*Spherical Anvils*

Contact the Fowler Technical Department for special anvil applications.