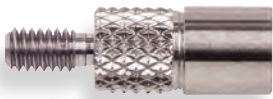


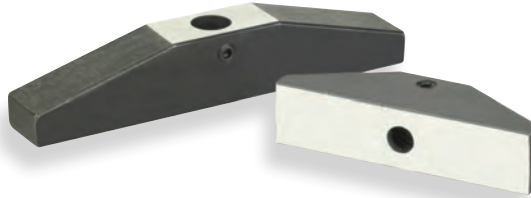
Indicator Point Adaptors



▲ No. 52-526-333 Kit which includes 1", 2" and 3" extension points.



No. 54-618-470 Conversion point adaptor (metric to inch).



No. 52-125-002 & 004 Depth Bases

Special Features No. 54-618-470:

- The Metric to Inch Conversion Point allows metric threaded indicators and probes to use standard AGD 4-48 points.
- The internal thread accepts 4-48 standard points and extensions.
- External thread is a metric M2.5.
- Manufactured from cold rolled steel, black oxide plated.

Special Features No. 52-526 Series:

- Kit No. 52-526-333 contains our most popular extension point sizes—1", 2" and 3".
- Extension points available individually in sizes 1", 1-1/2", 2", 2-1/2", 3", 4" and 6".
- All extension points have 4-48 external and internal threads.
- Manufactured from cold rolled steel with a black oxide plating.

| Part Number | Description |
|---------------------------------|---|
| Metric to Inch Conversion Point | |
| 54-618-470 | 1/2" Long Metric to Inch Conversion Point Adaptor |
| Extension Points | |
| 52-526-333 | Extension Kit (Includes 1", 2" and 3" Extension Points) |
| 52-526-001 | 1" Extension Point |
| 52-526-002 | 1-1/2" Extension Point |
| 52-526-003 | 2" Extension Point |
| 52-526-004 | 2-1/2" Extension Point |
| 52-526-005 | 3" Extension Point |
| 52-526-006 | 4" Extension Point |
| 52-526-007 | 6" Extension Point |
| Depth Bases | |
| 52-125-002 | Dial Indicator Depth Base—Length 2-1/2" |
| 52-125-004 | Dial Indicator Depth Base—Length 4" |

